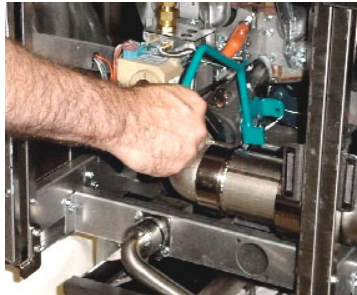


Solstice Simple Filtering Instruction: “Read Manual Before Operating Filter”

Warning: Before Filtering Turn Fryer Off. Use Oil proof Insulated gloves. Gloves not shown in pictures for improved visual clarity.

2 Step Filtering



Pull BLUE Drain Handle down to drain shortening from fry tank into the filter pan.



Pull RED handle to turn Pump on to circulate shortening through the filter media.

To refill the tank lift BLUE Drain handle up.

Flush Hose Operation

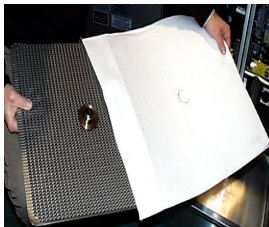


Connect hose to quick connecting fitting. Point filter hose nozzle outlet in to the fry tank.

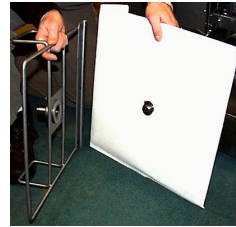


Pull YELLOW handle to turn Pump on to allow shortening to flow through the Flush Hose.

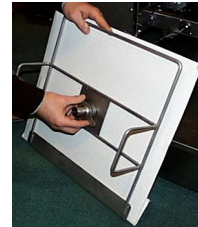
Changing Filter Media



Slide filter paper over filter paper support screen.



Fold open end of paper and attach filter paper clip.



Turn lock nut to tighten assembly.



Lower Filter Screen Pickup assembly into Filter pan.



Swing pick up tube down to mate with Filter Screen.

