



**Model LJ-FBGD18
Flat Bottom Dump Cabinet
For Low Hood Other Than Canopy**



Model LJ-FBGD18 Flat Bottom Dump Cabinet For Low Hood Other Than Canopy



APPLICATION

The LJ-FBGD18 Dump Cabinet is for LJS stores with a low over the fryer dishing station. The dump cabinet centrally located in a flat bottom frying system will hold frying tools and is used to drain batter crumbs. The pan liner returns the drained oil back into the filter pan for future use.

The Dump cabinet is typically located in the center of the Flat Bottom frying system and the exact location should be specified when placing an order as follows:

LINE UP consist of: (See back of sheet for drawing examples)

Example 1: 24/24/Dump/24/18

Example 2: 24/24/Dump/24/24/18

Other Line ups are available please consult factory.

STANDARD DUMP CABINET FEATURES

- 4 1/2" (11.4 cm) Crumb drain pan constructed of stainless steel
- Cabinet-stainless steel sides, front, splash back
- Heavy duty 3/16" (.48 cm) door hinges
- 9" (22.9 cm) swivel adjustable rear and front casters
- Front top rail includes 1" lip for fish tubs
- Filter System Ready

ACCESSORY ITEMS SHIPPED WITH UNIT

- 2 - Removable crumb baskets
 - 2 - Dishing Station spacer brackets
 - (*)-Dishing Station Oil Deflector
- *The exact quantity will be shipped to match the fryer size and quantity as specified on the Fryer System line up that the Dump Cabinet will be attached to.

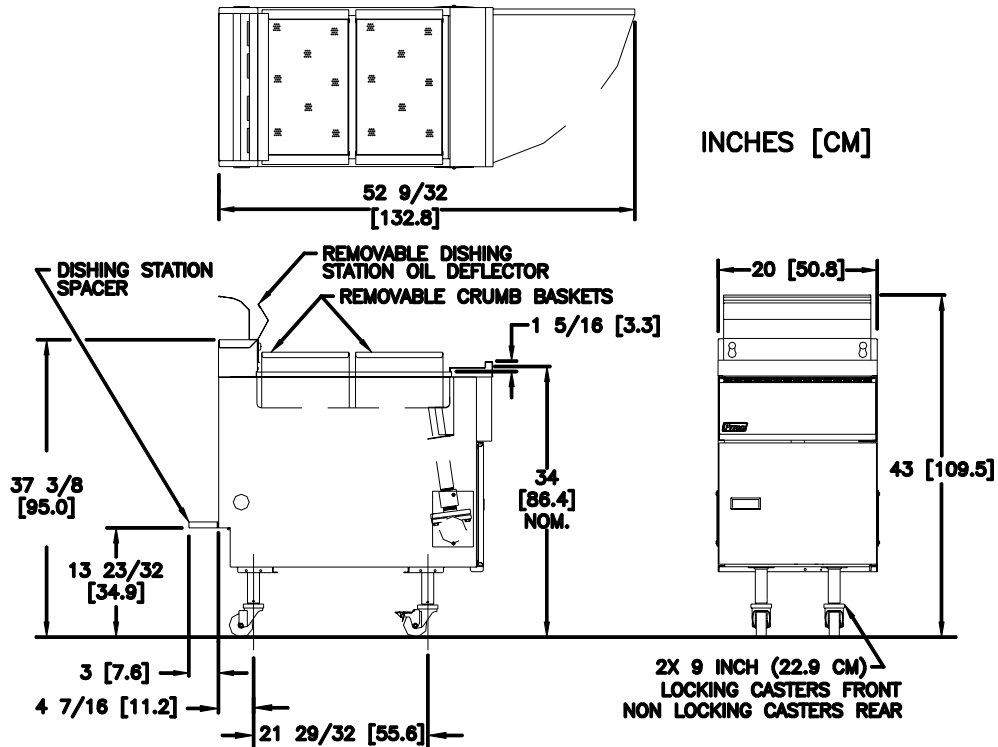
SHORT FORM DESCRIPTION

Dump Cabinet, Flat Bottom LJ- FBGD18, Dump Cabinet is centrally located in a Fryer system and comes with SS sides & front, casters. Accessories includes: (2) removable crumb baskets, (2) dishing station spacer brackets. (*) dishing station oil deflectors will match the fryer system line up quantity. Please specify fryer system line up when ordering. Startup performance check by a qualified service representative.

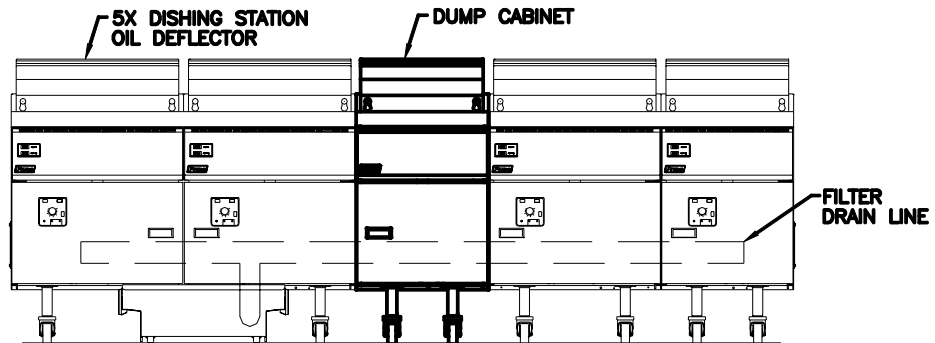


Model LJ-FBGD18 Flat Bottom Dump Cabinet For Low Hood Other Than Canopy

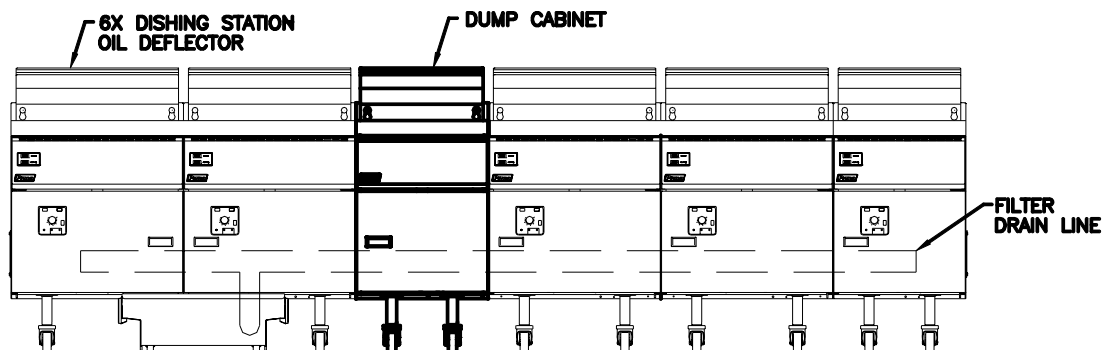
DUMP CABINET



EXAMPLE 1: 24/24/DUMP/24/18



EXAMPLE 2: 24/24/DUMP/24/24/18



SHIPPING INFORMATION

Model	Shipping Weight	Shipping Crate Size H x W x L	Shipping Cube
LJ-FBD18*	175 Lbs (79.4 kg)	45 x 23 x 38 in (88.9 x 58.4 x 96.5 cm)	23 ft ³ (0.6 m ³)

* This unit will be shipped in a crate, separate from the other fryers ordered.



Pitco Frialator, Inc • P.O. Box 501, Concord, NH 03302-0501 • 509 Route 3A, Bow, NH 03304

603-225-6684 • FAX: 603-225-8497 • www.pitco.com

L10-198 Rev 1 11/05

Printed in the USA