



KF-SG6H and KF-SGF18
Installation Instructions for
Viking Pump replacement

Viking Pump Replacement Instructions – Pitco Model KF-SG6H, KF-SGF18 Fryers

60143509-CL- KIT Includes:



KIT ITEM NO.	P/N	DESCRIPTION	QTY
1	60143509	PUMP, ASSEMBLY 115/230V SPUR GEAR ZTF	1
2	P7037351	NIPPLE, BLACK 3/4 NPT SPACE	2
3	P9037679	ELBOW, BLACK 3/4 NPT	1
4	60158001	THREAD SEALANT,FLUROPOLYMER 2OZ	1
5	P5045140	TIE, CABLE 1/16 - 5/8	5

Viking Pump Replacement Instructions – Pitco Model KF-SG6H, KF-SGF18 Fryers

Tools Needed



TOOL ITEM NO.	DESCRIPTION
1	Variable speed, reversible drill with 5/16" hex bit
2	1/4" Hex driver
3	Phillips screw driver
4	Flat blade screw driver
5	7/16" Open end wrench
6	1/2" Open end wrench
7	9/16" Open end wrench
8	7/8" Open end wrench
9	1 1/16" Open end wrench
10	Large adjustable wrench
11	Black electrical tape
12	Side cutters
13	7/16" Socket and ratchet
14	Large slip joint pliers
15	Adjustable pipe wrench

Viking Pump Replacement Instructions – Pitco Model KF-SG6H, KF-SGF18 Fryers



WARNINGS:

1. The power supply to appliance MUST be disconnected before performing this replacement



2. Ensure that the gas supply to this appliance is tuned OFF and gas hose is disconnected before performing this replacement.



3. Drain the tank into an appropriate container and ensure that the appliance has cooled to room temperature before performing this replacement. DO NOT work on a hot appliance or any appliance containing hot cooking medium; serious personal injury may occur.

Viking Pump Replacement Instructions – Pitco Model KF-SG6H, KF-SGF18 Fryers



Step 1. Disconnect pump power supply and heat tape power supply (if equipped) from pump box. Cut wire ties to strain relief bracket with side cutters if necessary.



Step 2. Using the variable speed drill with 5/16" hex bit, remove the qty-5 self tapping screws that mount the polishing handle and the polishing handle retaining bracket.



Step 3 Use a 7/8" open end wrench to disconnect the polishing tube flare fitting from the 3-way valve fitting.



Step 4. Use a 9/16" open end wrench to remove polishing handle from 3-way valve fitting.



Step 5. Disconnect union connection from pump assembly to return fill tube using the adjustable pipe wrench.

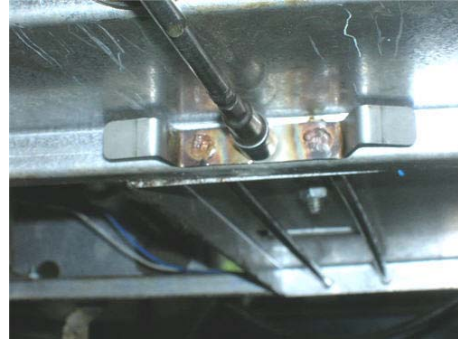


Step 6. Remove the qty-4 1/4-20 bolts/nuts that mount the RIGHT filter rail to the cabinet with the 7/16" socket/ratchet and 7-16" open wrench. Do NOT remove rigid caster bolts

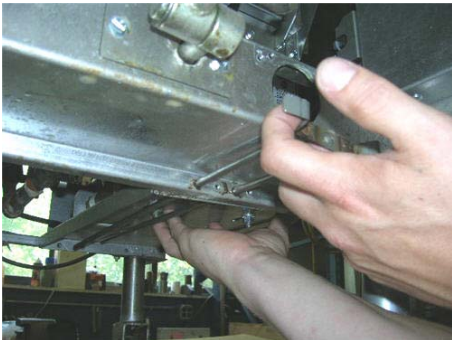
Viking Pump Replacement Instructions – Pitco Model KF-SG6H, KF-SGF18 Fryers



Step 7. Remove the pick up block weldment using the large slip joint pliers. Can also be removed by clamping on 3/4" npt nipple.



Step 8. Using the variable speed drill with 5/16" hex bit, remove pump retaining rods self tapping screw from retaining rod retaining bracket.



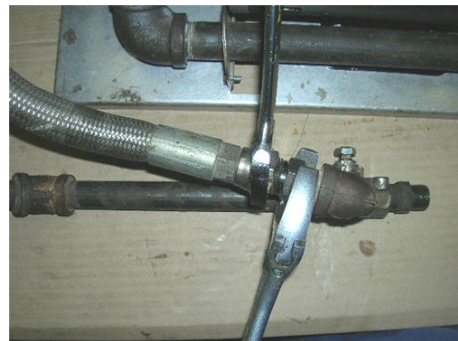
Step 9 Remove pump retaining rods while supporting the pump assembly from underneath.



Step 10. Slide pump assembly to the left and lower left hand side of pump assembly. Use caution that no wires or power supply cables are pinched. Remove pump assembly from cabinet.



Step 11. If fryer is equipped with heat tape, cut existing white heat resistant tape in order to remove heat tape from pump assembly. Discard heat tape.

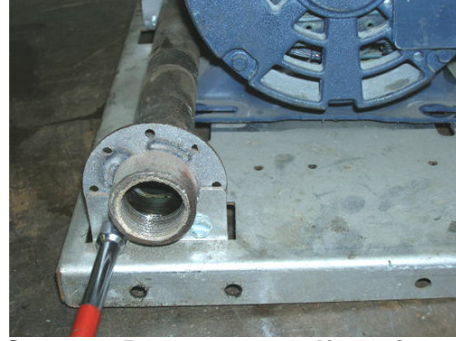


Step 12. Break the connection between the braided flexible hose and the polishing piping by using a 1 1/16" open end wrench. Use large adjustable wrench if necessary to hold fitting.

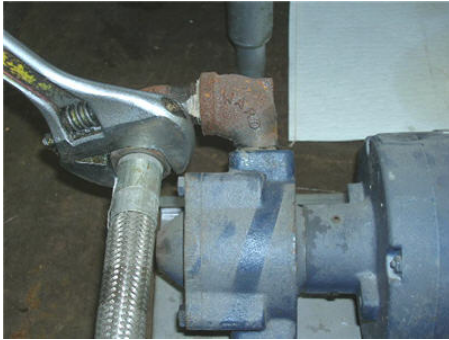
Viking Pump Replacement Instructions – Pitco Model KF-SG6H, KF-SGF18 Fryers



Step 13. Remove two self tapping screws attaching the U-bracket to pump plate assembly using the variable speed, reversible drill with 5/16" hex bit.



Step 14. Remove two self tapping screws holding the inlet coupling weldment with variable speed drill with 5/16" hex bit.



Step 15. Remove braided flexible hose from pump head outlet piping by using a large adjustable wrench.



Step 16 Remove one of the two 90 degree 3/4" npt street elbows from pump head outlet piping by using an adjustable pipe wrench.



Step 16A. (Viking Pump Replacement Only) Remove 3/4" npt space nipple using a large adjustable pipe wrench.



Step 16B (Viking Pump Replacement Only) Remove 3/4" npt street elbow from Viking pump outlet port using large adjustable pipe wrench.

Viking Pump Replacement Instructions – Pitco Model KF-SG6H, KF-SGF18 Fryers



Step 17. Remove pump mounting hardware using 1/2" open end wrench.



Step 18. Remove inlet nipple with pump inlet coupling attached using an adjustable pipe wrench.



Step 19. With adjustable pipe wrench, remove 90 degree 3/4" npt elbow from pump head inlet piping. Note: if 3/4" npt close nipple is removed with 90 degree elbow, remove close nipple from elbow and discard close nipple.



Step 20. Remove electrical cover plate from pump motor with phillips screw driver. Remove electrical tape, wire nuts and untwist power cord leads from pump wire leads.

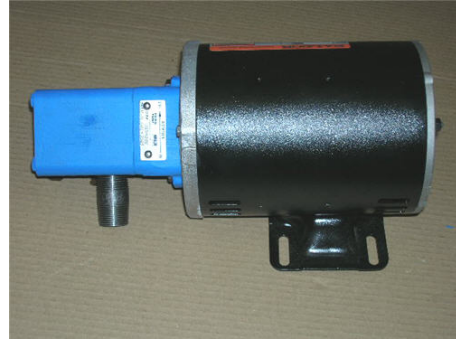


Save power cord and wire nuts needed for later pump assembly replacement.

Viking Pump Replacement Instructions – Pitco Model KF-SG6H, KF-SGF18 Fryers



Haight pump shown with fittings that will not be needed.



Viking Pump shown with fitting that will not be needed.



Step 21. Locate parts from replacement kit. Remove the plastic thread/gear protective caps from pump (kit item 1) with the large adjustable wrench.



Step 22. Apply thread sealant with fluoropolymer (kit item 4) to both ends of 3/4" space nipple and to end of pump inlet nipple with pump inlet coupling. Attach 90 degree 3/4" npt elbow and 3/4" npt space nipple (kit item 2) to pump inlet port as shown using an adjustable pipe wrench. Assemble nipple with pump inlet coupling to 3/4" 90 degree elbow using adjustable pipe wrench.



Step 23 Loosen pump head mounting bolts (qty-2) with the 1/2" wrench (do not remove)



Step 24. Set pump on pump plate, rotate both pump head and inlet supply nipple until mounting holes align. Screw coupling to plate using qty-2 10-24 self tapping screws with variable speed drill with 5/16 hex bit.

Viking Pump Replacement Instructions – Pitco Model KF-SG6H, KF-SGF18 Fryers



Step 25. Tighten pump head bolts with 1/2" wrench.



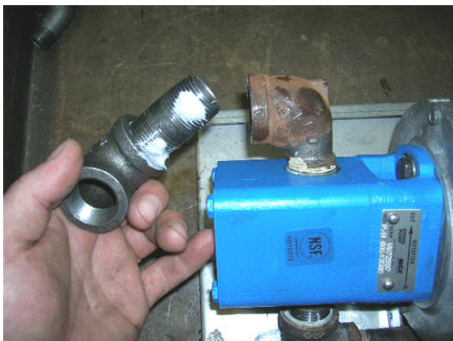
Step 26. Reassemble U-bracket to pump plate using qty-2 10-24 self tapping screws. U-bracket may interfere with pump. Bend as needed to provide clearance.



Step 27. Final step of assembling pump to pump plate is to use the 1/2" open wrench to secure pump to pump plate using qty-3 bolts, washers and nuts.



Step 28. Apply thread sealant with fluropolymer (kit item 4) to male threads of the 3/4" npt 90 degree street elbow taken from old pump assembly and assemble it to pump outlet port with adjustable pipe wrench. See next step for street elbow orientation.



Step 29. Apply thread sealant with fluropolymer (kit item 4) to both ends of 3/4" npt space nipple (kit item 2) and assemble space nipple and 3/4" npt 90 degree elbow (kit item 3) to street elbow on pump outlet port using an adjustable pipe wrench. See next step for orientation.



Step 30. Apply thread sealant with fluropolymer (kit item 4) to 3/4" npt male threads on flexible braided hose and assemble it to pump outlet piping as shown with large adjustable wrench.

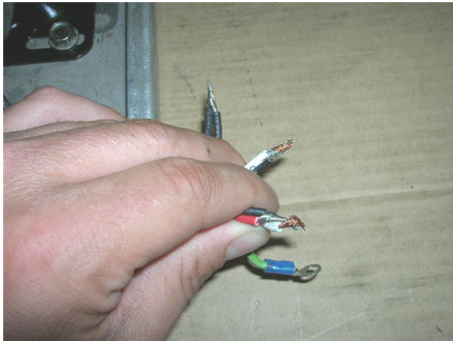
Viking Pump Replacement Instructions – Pitco Model KF-SG6H, KF-SGF18 Fryers



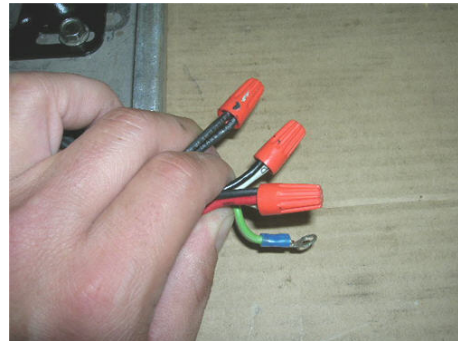
Step 31. (Do not use thread sealant with fluoropolymer on flare fitting connections) Assemble polishing piping to flexible braided hose using 1 1/16" open end wrench and large adjustable wrench. Valve stem on ball valve to be located as shown Note: Do NOT twist flexible braided hose.



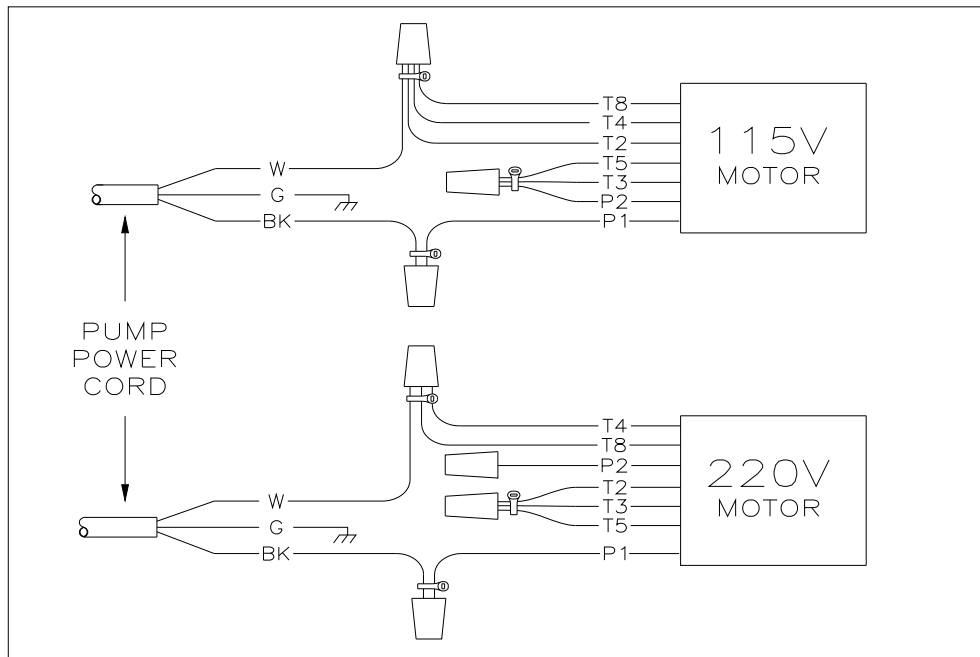
Step 32. Remove pump motor plate using the 1/4" hex driver and pull out pump wires for ease of access in order to wire pump power cord from removed pump.



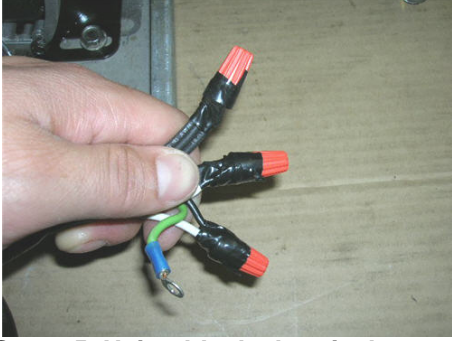
Step 33. Twist together wires from pump and pump power cord per wiring diagram below.



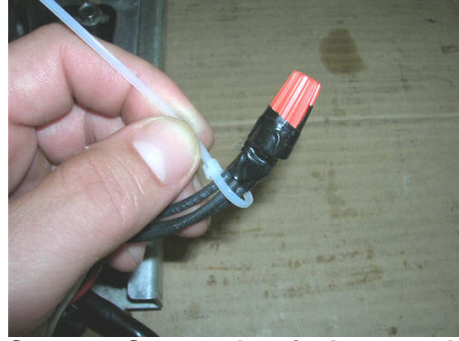
Step 34. Twist orange wire nuts onto twisted bundles of wires from previous step.



Viking Pump Replacement Instructions – Pitco Model KF-SG6H, KF-SGF18 Fryers



Step 35. Using black electrical tape, secure orange wire nuts onto twisted bundles of wires.



Step 36. Secure electrical tape and orange wire nuts with qty-3 wire ties (kit item 5).



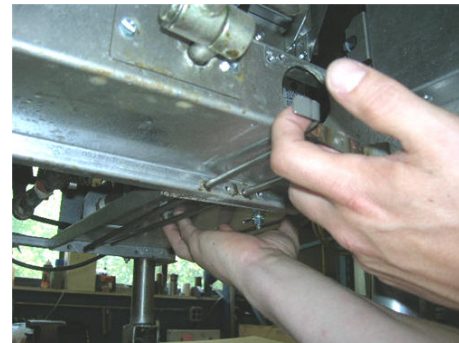
Step 37. Secure blue ring terminal for ground to pump using a 1/4" hex driver. Hex head screw for ground is supplied with pump.



Step 38. Replace pump motor plate using the 1/4" hex driver. Pump assembly is complete.

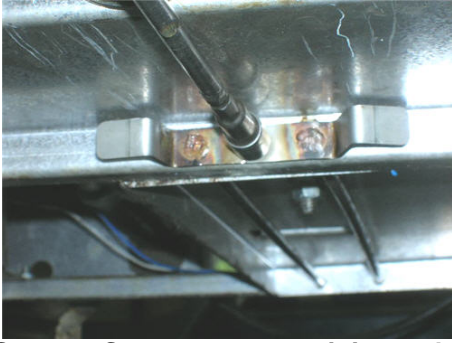


Step 39. Reassemble pump assembly into cabinet by sliding pump underneath fryer, lifting up from middle and positioning the right side of pump plate into right cabinet side support groove. Raise left hand side to align pump retaining rod holes with holes in both front and rear bottom brace. Note. Take extra precaution as to not pinch any wires in this step

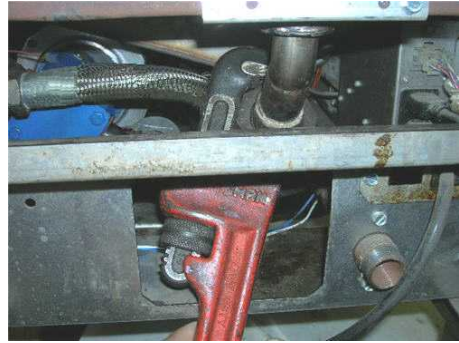


Step 40. Support middle of pump plate while inserting pump retaining rods into place.

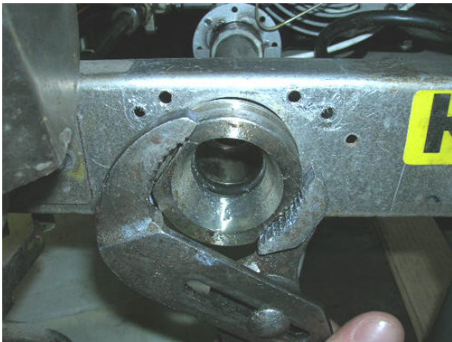
Viking Pump Replacement Instructions – Pitco Model KF-SG6H, KF-SGF18 Fryers



Step 41. Secure pump retaining rods with qty-1 10-24 self tapping screw with variable speed drill with 5/16" hex bit.



Step 42. Make connection with polishing piping and filter return tube with adjustable pipe wrench.



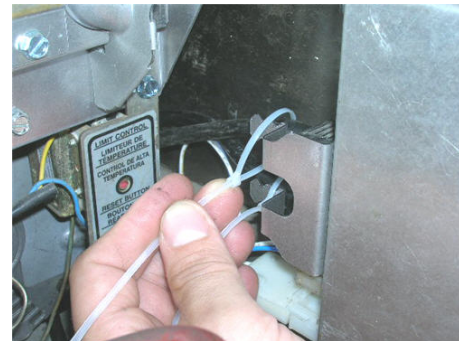
Step 43. Apply thread sealant with fluoropolymer (kit item 4) to male threads of pick up and assemble into pump inlet coupling weldment.



Step 44. Reconnect polishing tube to polishing piping using the 7/8" open end wrench.



Step 45. Reconnect polishing handle to polishing piping with the 9/16" open end wrench. Position red polishing handle above probe (as shown) prior to tightening.



Step 46. Plug in pump power cord to pump box. Use two plastic wire ties (kit item 5) to tie power cords to strain relief bracket, if present.

Viking Pump Replacement Instructions – Pitco Model KF-SG6H, KF-SGF18 Fryers



Step 47. Assemble polishing brackets to polishing handle and fryer using qty-5 10-24 self tapping screws with the variable speed reversible drill with 5/16" hex bit.



Step 48. Reassemble right filter rail with qty-4 1/4-20 bolts, washers and nuts using the 7/16" open end wrench and 7/16" socket and ratchet.

Viking Pump Replacement Instructions – Pitco Model KF-SG6H, KF-SGF18 Fryers

Viking Pump Replacement Instructions – Pitco Model KF-SG6H, KF-SGF18 Fryers

In the event of problems with or questions about your order, please contact the Pitco Frialator factory at:

(603) 225-6684 World Wide

In the event of problems with or questions about your equipment, please contact the Pitco Frialator Authorized Service and Parts representative (ASAP) covering you area, or contact Pitco at the numbers listed to the left.

MAILING ADDRESS - P.O. BOX 501, CONCORD, NH 03302-
SHIPPING ADDRESS - -10 FERRY ST., CONCORD, NH